



ALNUKHBAH - DCARBON



## About



شركة النخبة الوطنية  
للتنظيم والتدريب والمؤتمرات ذ.م.م  
AL-NUKHBAH AL-WATANIYA  
FOR TRAINING, EXHIBITIONS, CONFERENCES Co. W.L.L.

A subsidiary of Kuwait Life Sciences Company [K.L.S.C.], a subsidiary entity of the National Technology Enterprises Company [N.T.E.C.]. Established in 2002, N.T.E.C. is fully funded by the Kuwaiti Investment Authority [K.I.A], the sovereign wealth fund of Kuwait.

The Life Science Academy (LSA) is a pioneering institution dedicated to advancing the field of life sciences in Kuwait. Established with the aim of bridging the gap between academia and industry, LSA offers a comprehensive range of specialized training programs and workshops designed to equip professionals with the latest knowledge and skills. By fostering a collaborative environment and promoting continuous learning, LSA contributes significantly to the growth and development of the healthcare and life sciences sector in the country.

### Services:



Education  
& training



Conferences



Exhibitions



Event  
management



DCarbon Global is a consulting firm specialising in sustainability and climate change. Our services cover a wide range of activities including; consultation, training & capacity building, reporting, digital solutions, communication, and assurance services.

We provide our services to public and private corporations, international and local organizations, governmental authorities, and civil society organizations all over the MENA region, the GCC, the EU, and the USA.

DCarbon Global, a sister company of DCarbon Egypt, which is a Global GRI-Certified Training Partner. DCarbon Egypt is also a strong supporter of TCFD and EPD initiatives, with a track record of success stories that span across various sectors regionally and internationally, including but not limited to Financial, Industrial, Telecom, ICT, Real Estate, Oil & Gas, and Health industries.

**EMPOWER. BUILD. TRANSFORM.**

Background

# Our Story

DCarbon Global

2024 >>>

**Partners of Choice**  
Driving & Managing  
ESG Transitions

**ESG System Architect**  
Leading & Managing  
ESG Transitions

2022-2024

**Service Provider**  
Driving ESG  
Transitions

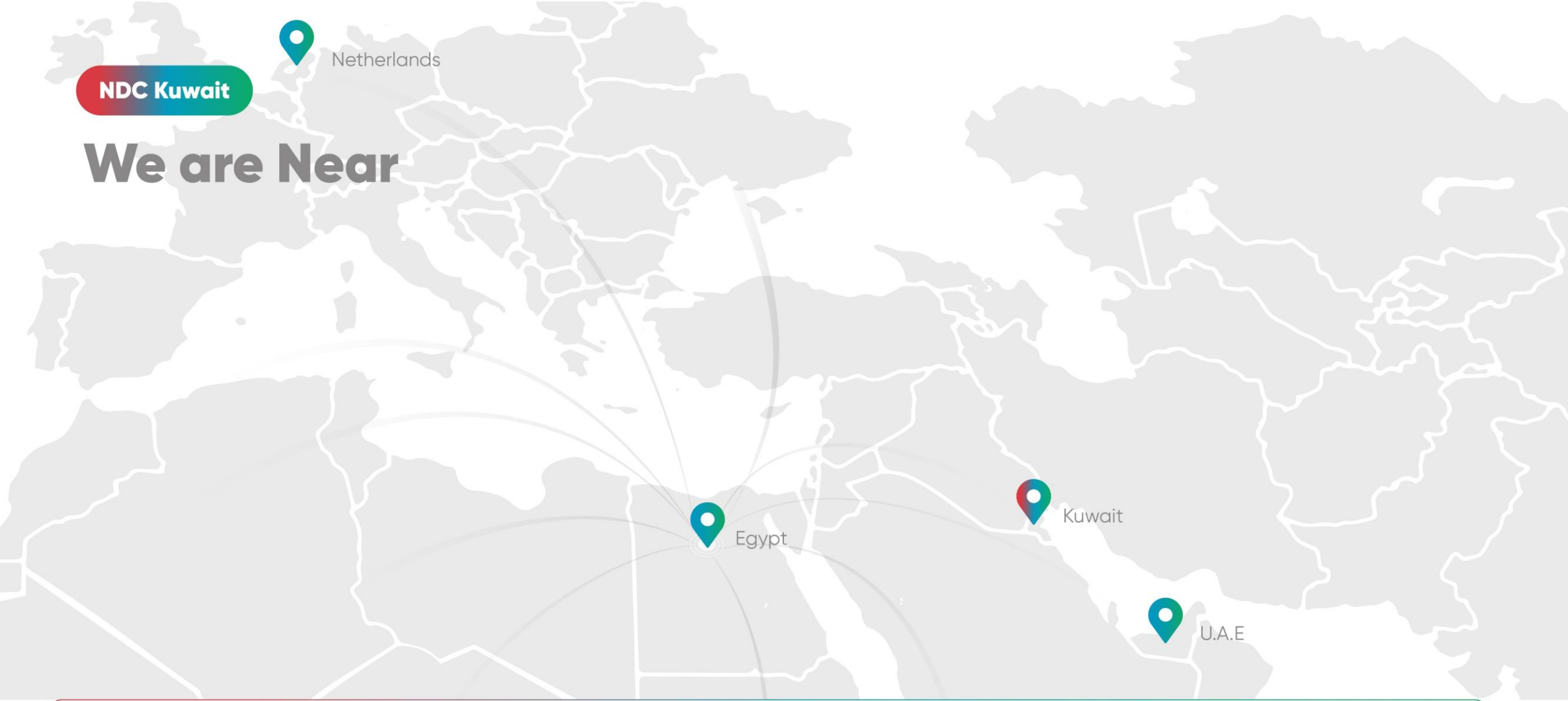
2019-2021

2015-2018

**NDC Kuwait**

Netherlands

# We are Near



- » EU
- » USA
- » Uganda
- » Rwanda
- » Egypt
- » Kuwait**
- » KSA
- » U.A.E
- » Qatar
- » Bahrain
- » Oman
- » Malaysia

# 30+ Products and Services



**Consulting**



**Reporting**



**Assurance**



**Training &  
Capacity  
building**



**Digital  
Solutions**



**Sustainable  
Event MGT**





## Consulting



ESG due diligence



TCFD, scenario analysis and stress testing



ESG Portfolio Scoring



ESG benchmarking and ratings



IFRS S1/S2 gap assessment and implementation



Green Procurement & ESG scoring



ESG gap Report



Principles of responsible banking (PRB)



Stakeholders engagement AA1000



ESG strategy, polices and governance



Principles of responsible investments (PRI)



CBAM Stress Testing



Environmental and social risk MGT systems



SBTi Consultation



Green Solutions: Green bond, carbon credits & I-RECs certification and trading



## Reporting



Sustainability report



E&S evaluation reports



Climate communication report



Carbon footprint report



UNEP FI PRB, PRI, PSI report



Ecological footprint report



TCFD report



## Assurance



ESG report limited assurance



Carbon footprint third party assurance



ESG report third party assurance



ISO Assurance



Carbon footprint limited assurance





## Training & Capacity Building



ESG reporting (GRI)



SBTi



Carbon markets



CFP reporting (GHG Protocol/ ISO)



Portfolio impact assessment



Board of Directors & ExCo Knowledge Bite



CBAM



Sustainable finance



Implementing ESG across different departments



## Digital Solutions



ESG Data Collection



GHG emissions scope (1, 2,3)



Financed Emissions



# ESG&

Innovation with IMPACT



**Sustainable  
Event MGT**

## Screening the frameworks (Direction: Sustainable Events)

**Certification  
through Standards**

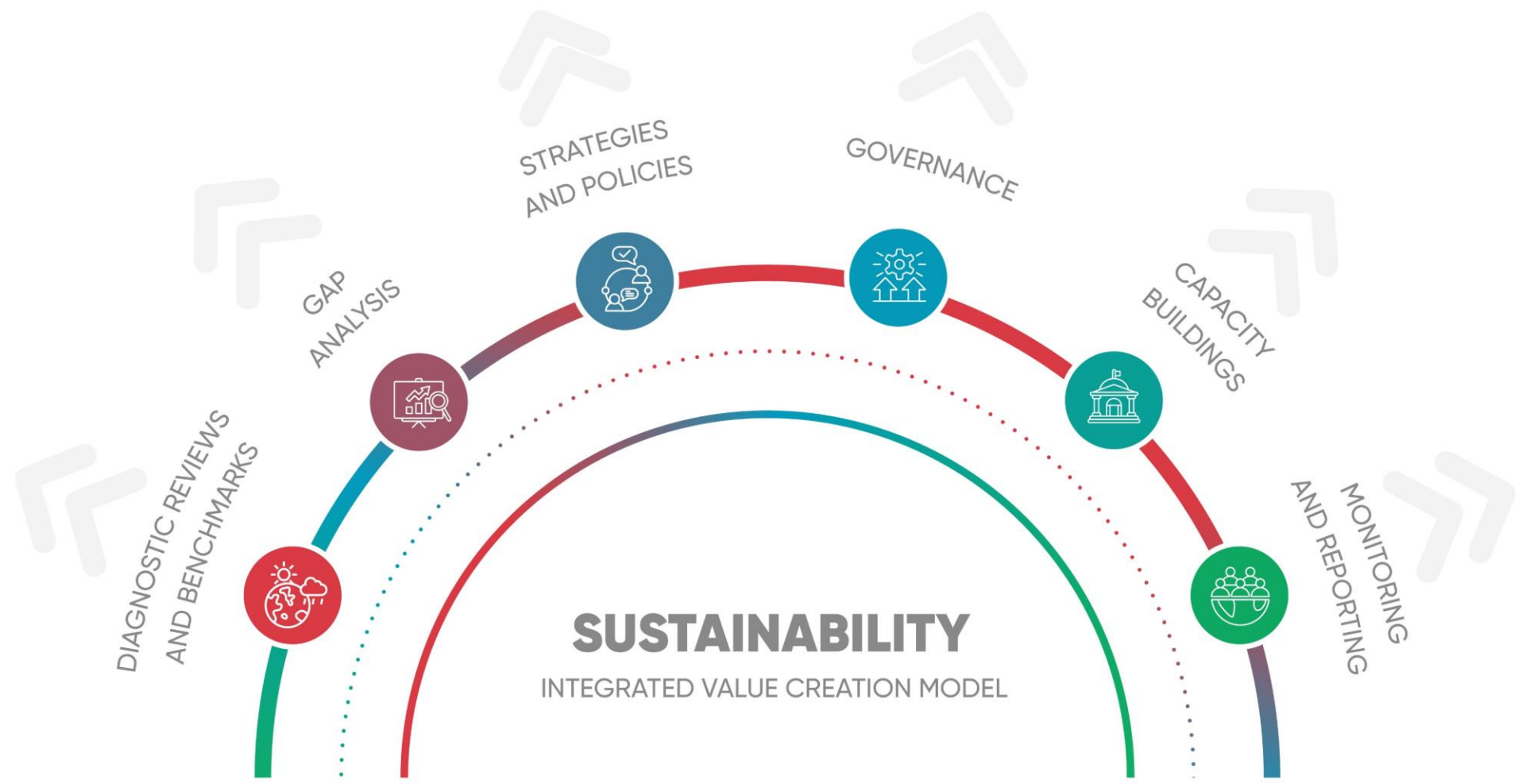


**Alignment to  
Frameworks/Guidelines**



**Assured Reporting  
(Post Event)**





# Sectors

- Banking & Finance
- Petrochemical
- Real Estate
- Food & Beverage
- Construction
- Telecom
- Construction Materials
- Education
- Healthcare
- Transportation
- Oil & Gas
- Tourism





# Stakeholder Consulted



INTERNATIONAL  
ORGANIZATIONS



REGIONAL  
ORGANIZATIONS



NATIONAL  
GOVERNMENTS



REGULATORS



PRIVATE SECTOR



PUBLIC SECTOR



ACADEMIA



CIVIL SOCIETY  
ORGANISATIONS  
(CSOs)

# In Figures

**+100**

Companies and  
Financial Institutions  
Consulted

**+200**

Companies  
Trained

**+20**

Countries

**12**

Sectors  
Consulted

**+10**

Government  
and international  
organizations  
consulted



**+1000**

Trainees

**+20**

Partners  
globally

# DCarbon Global Financial Sector Clients (Kuwait)

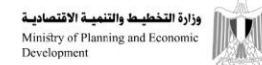


بيت التمويل الكويتي  
Kuwait Finance House



# Financial Sector







# Sister Companies and Affiliates



EPD



ESG&



SALUS GLOBAL



Al-Nukhbah Al-Wataniya



# Our Impact Approach



01

We Transfer Knowledge

02

We Bring International Benchmarks to Regional and Local Contexts

03

We Combine Science and Policy to Serve Business

04

We Capitalize on Extensive and Diverse Subject-Matter Expertise

05

We Provide Integrated Solution

# THANK YOU

## Contact Us:

 [Info@ndckuwait.com](mailto:Info@ndckuwait.com)

 +965 6067 3399  
+965 9918 7902

 NDC Kuwait

